

Neighbor to Neighbor

United Neighborhoods of Evansville



320 SE Martin Luther King Jr Blvd, Ste B, Evansville, IN 47713 | www.unoevansville.org | 812-428-4243

April 2024

Volume #24 Issue #4

A monthly publication of
United Neighborhoods
of Evansville, Inc.
office@unoevansville.org

*Neighborhood
Associations Working
together to preserve,
enhance, and promote
the city of Evansville.*

Totality

On Monday, April 8th, at 2:02PM (for approximately 3 minutes and 2 seconds) Evansville was plunged into total darkness! Street lights came on, birds went quiet, crickets starting chirping, and the temperature dropped almost 5 degrees.

It was known on some t-shirts as “The great North American Tour”; the moon passing directly in front of the sun causing a Total Solar Eclipse for a large portion of North America. Thousands of people at various locations all around the tri-state area gathered together on downtown rooftops, in parking lots, or in their own front yards, and donned their protective eye wear to see something that will not be seen again (not in Evansville anyways) for another 100 years.

We had travelers from all over choosing Evansville as the perfect place to witness the celestial event, including visitors from San Diego, Chicago, Atlanta, Germany, and the Country of Wales.

It was an amazing event that everyone will remember, and was great for tourism in Evansville.

Congratulations

The United Neighborhoods of Evansville wishes to congratulate our good friends Larry Samples and Lucy Williams on receiving the Leadership Everyone’s Lifetime Achievement Award on March 19th at the annual Celebration of Leadership.

The Mission of Leadership Everyone is to develop effective leaders committed to using diversity and creativity for the betterment of the community. Leadership Evansville, through its staff and volunteers, teaches people to identify their passion for community betterment, to make a commitment to create a better community, and to take responsibility for making sustainable changes.

These attitudes, skills, and processes are taught to adults, youth, organizations, not-for-profits, businesses, educational institutions, neighborhood associations, churches, and other leadership programs.

Congratulations Larry and Lucy and thank you again for everything you do!

Yard Waste and Lawn Clippings

City of Evansville Municipal Code—Illicit Discharge

Illicit Discharge

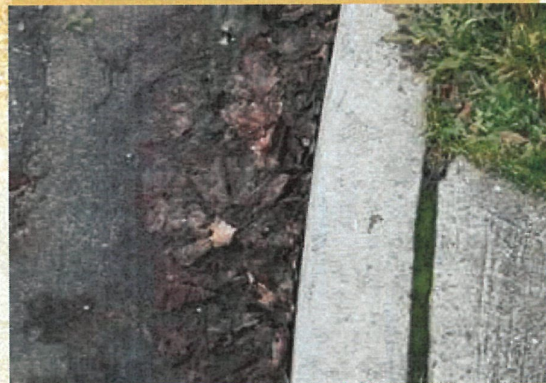
An illicit Discharge is defined in the City of Evansville Municipal Code as:

“Any discharge to a municipal separate storm sewer (MS4) conveyance that is not composed entirely of storm water, except naturally occurring floatables, such as leaves or tree limbs that are not deliberately concentrated. Sources of illicit discharges include sanitary wastewater, septic tank effluent, car wash wastewater, oil disposal, radiator flushing disposal, laundry waste water, roadway accident spillage, household hazardous wastes, and deliberately concentrated yard waste.”

The City Engineer’s Office and the Storm Water Coordinator are requesting that Citizens of the City make an effort to comply with this Ordinance by collecting and disposing of grass clippings, leaves, limbs etc. in a proper manner. Blowing or sweeping these materials into the roadway or curb line deliberately is a direct violation. These leaves can be carried down the curb line and into the storm drainage system blocking the flow of storm water leaving the city streets and surrounding property. These materials will also decay and cause the streams and rivers to be contaminated.



Help protect our Rivers and Streams by not placing concentrated yard waste in the curbs and gutters of the streets. They will drain directly into the City Storm System which drains to the Ohio River.



Concentrated Yard Waste

Karan Barnhill, Storm Water Coordinator
City Engineer’s Office
1 NW Martin Luther King Jr. Blvd.—Civic Center
Evansville, IN 47708
Phone: 812-436-4977
E-Mail: kbarnhill@evansville.in.gov
Website: www.evansville.gov

ILLICIT DISCHARGES

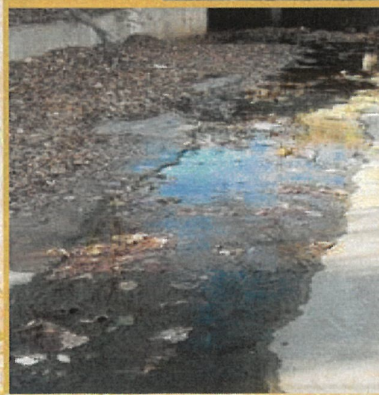
Yard Waste, Leaves and Grass Clippings

It is important to remember that everything we do in our City can have an effect on our environment.

All of the City Streets drain to the Ohio River and therefore everything that goes into the streets and street drains are also going to go to the Ohio River.

The following is a list of suggested practices for yard clean up and routine maintenance:

- ◆ Blow or rake leaves and grass clippings back into your lawn. This adds nutrients to your lawn.
- ◆ Empty mulch bag into a garbage bag and dispose of properly. Do not put in ditches or swales.
- ◆ Use a compost pile or compost barrel.



***Concentrated
Yard Waste can
also cause local-
ized flooding.***

Heavy Trash Pick Up

Heavy Trash Pickup Goes Year-round.

Changes to the Evansville Water and Sewer Utility's heavy trash service now make it easier for residential customers to dispose of heavy trash throughout the year. The service has changed from two heavy trash days a year to pickups scheduled by the customer as often as every two weeks, except during fall leaf collection, which runs from November through mid-December. That means you know when your heavy trash will be collected and less mess sitting at your curbside.

How It Works

- Call Republic Services at (800) 886-3345 to schedule a pickup for a specific day.
- The day before your scheduled pickup, place your item where you normally place your trash and recycle.
- A collection truck will pick it up and you're done.

What's Accepted and What's Not

One item is accepted per pickup, except for items that are usually a pair, such as a mattress and a box spring or a table and chairs.

Allowable items include:

- Appliances - such as a stove, washer, dryer, water heater, as well as a refrigerator or freezer with refrigerants removed and tagged by a certified professional.
- Furniture - such as a sofa, table, chair, mattress, box spring, dresser or bookcase.
- Carpet - one rolled section that's less than 4 feet long and 2 feet around.
- Household items and tools - such as a rake or shovel.
- Limited construction and building material - in one container; no boxes, bags, loose piles or stacks

Items not allowed include:

- Auto parts - like batteries and tires
- Electronics - TV, computer, computer parts, laptop, VCR, printer, or accessories
- Construction materials - such as concrete blocks, bricks, steel poles or privacy fencing
- Hazardous materials - any materials that are hazardous to humans or animals

Who's Eligible

Heavy trash service is available to City residents who pay for trash service with their water bill. Apartment complexes, mobile home communities, businesses, commercial customers, and County residents are not eligible.

More information available at www.ewsu.com/heavytrash.

EPD'S PARK PATROL UNIT

5 OFFICERS FOR YOUR 67 PARKS
MAIN LINE: 812-436-4953



**OFFICER
KITZINGER**



**OFFICER
GREEN**



**OFFICER
FAHSE**



**OFFICER
ROSE**



**OFFICER
CULVER**

The Evansville Police Department has named five officers who will be responsible for responding to runs to Evansville's 67 parks.

The Park Patrol Unit is made up of Officers Kitzinger, Green, Fahse, Rose and Culver and are led by Lieutenant Matt Karges. The Parks Unit's main priority is to keep the parks safer for everyone and to be a direct resources for park related groups, park goers and other officers.

The Parks Unit will focus on engaging the public, promoting education, enforcing the law and building relationships with all those who use the parks.

Crime Prevention Unit 2024

EPD'S CRIME PREVENTION UNIT



**JOSH BREWER
SERGEANT**

100 E WALNUT STREET - SUITE 100
MAIN LINE: (812)435-6135



**MARIO REID
MENTAL HEALTH / HOMELESS LIAISON**



**JOHN MONTGOMERY
WEST SECTOR 1/2**



**BEN HALLMARK
WEST SECTOR 3/4**



**ANDREW SMITH
EAST SECTOR 1/3/5**



**TERRANCE EASTWOOD
EAST SECTOR 2/4/5**



**DC CHRISTIAN
SOUTH SECTOR 1**



**BILL FENDEL
SOUTH SECTOR 2**



**CHAD DIEDRICH
SOUTH SECTOR 3**

We would like to introduce you to the Evansville Police Departments Crime Prevention Unit for 2024.

Evansville Police Department Crime Prevention Unit has 8 Crime Prevention Officers (CPO), and 1 Sergeant. There are 3 sectors and 12 beats, and each beat has a CPO assigned. In each sector and beat there are 42 neighborhood associations which have a CPO assigned. The CPOs work closely with the neighborhood associations building trust and working together to solve crime.

The CPO Unit provides security instruction as well as information about the EPD and police work in general. Schools, businesses, organizations, churches, and individuals are encouraged to call (812) 435-6135 or stop by our Crime Prevention Office located at 100 E. Walnut St., Suite 100 for further information.

For information on the individual officers and the beats they will be covering visit www.evansvillepolice.com/crime-prevention-unit/

Free Paper Shredding



FREE PAPER SHREDDING EVENT

Friday, April 26

9:00 am – 12:00 pm

Wesselman Park

551 N. Boeke Road

(Shelter House #1, adjacent to the former golf course)

Shredding services will be provided for confidential or sensitive documents. Up to 100 pounds will be shredded courtesy of Piranha Mobile Shredding at no charge. Shredding occurs off-site.

VANDERBURGH COUNTY HOUSEHOLDS ONLY

FOR INFORMATION CALL THE SOLID WASTE DISTRICT
812-436-7800

www.evansville.in.gov/recycle

United Neighborhoods of Evansville
320 SE Martin Luther King Jr Blvd, Suite B
Evansville, IN 47713

Non-Profit Org.
POSTAGE
PAID
Evansville, IN
PERMIT NO. 1087

Return Service
Requested

2024 Membership Applications are now due.

For updated Meeting times and locations please contact your Neighborhood Association President.
If you need their contact information call the UNOE office and speak with Joe or Casey.

Office Hours - Monday thru Thursday 9:00am - 3:00pm

Phone # - 812-428-4243 Email - office@unoevansville.org

Web - www.unoevansville.org

Facebook - www.facebook.com/unoevansville



Neighbor to Neighbor

United Neighborhoods of Evansville

320 SE Martin Luther King Jr Blvd, Ste B, Evansville, IN 47713 | www.unoevansville.org | 812-428-4243