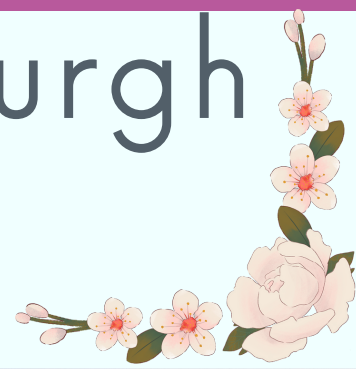




Growing Vanderburgh County



June 2022



CONTENTS

IN THIS ISSUE:

- Welcome!
- Monthly Nuggets
- Take a Closer Look
- Yard & Garden Calendar
- Events

Welcome!

I thought I would start out my newsletter with an attempt at humor. How do plants practice self-care? By trying to weed out all the unnecessary drama! June is finally here and with it, gardens and farms are showing off their early summer colors. There's nothing quite like seeing the Earth bloom to life after a long winter. Stop by your favorite farm stand or farmers market and help support local farmers while enjoying fresh produce!

If you know of anyone interested in receiving this newsletter, please have them contact me so I can add them to my list. *Similarly, Growing Vanderburgh County is a free service from the Purdue Extension Service of Vanderburgh County. Your name and email will never be shared with anyone else. If you wish to stop receiving these newsletters, reply by typing "UNSUBSCRIBE" in the subject line.*

CONTACT ME:

Meagan Diss

Urban Agriculture Educator - Vanderburgh County

mcdiss@purdue.edu

812-435-5287



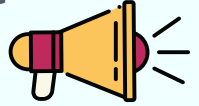
Monthly Nuggets

OISC Clean Sweep Pesticide Disposal



Indiana Pesticide Clean Sweep Project designed to collect and dispose of suspended, canceled, banned, unusable, opened, unopened, or just unwanted pesticides (herbicides, insecticides, rodenticides, fungicides, miticides, etc.) is being sponsored by the Office of Indiana State Chemist (OISC). This disposal service is free of charge up to 250 pounds per participants. Over 250 pounds there will be a \$2.00 per pound charge. For more information, participant sheet, and locations, click [HERE](#).

Asian Needle Ant



The Asian needle ant is our newest invasive insect pest and has now become a permanent resident, stinging ant. They are established in Vanderburgh County but are expected to slowly spread across the state. They invade dark, damp environments rich in decaying plant organic matter, including residential and urban properties. Asian needle ants are similar in appearance to both our common odorous house ant and the invasive Argentine ant but differ by; 1) having a prominent stinger, 2) having reddish tinted legs, mouthparts, antennae and stinger, and 3) being significantly larger in length. For more information, click [HERE](#).

Home Horticulture Series



Are you looking for some alternative ways to garden this year? A 5-week home horticulture series will be offered at the Evansville Vanderburgh Public Library Red Bank branch on Wednesday evenings in June. Sessions will run from 6-7pm, June 1st through June 29th on Wednesdays. Space is limited! Register by calling 812-867-4935 or emailing mcdiss@purdue.edu.

Call 811



Planning a home improvement project that involves digging? Installing a new fence or mailbox? Are you finally starting that garden you've been dreaming of? Digging projects big and small need a call to 811 at least two full working days before you start digging to avoid hitting an underground utility line. For more information about Indiana 811's free service, click [HERE](#).

Take a Closer Look

Container Gardening

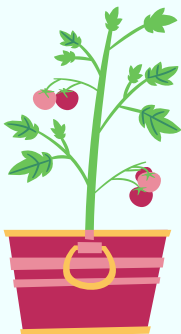
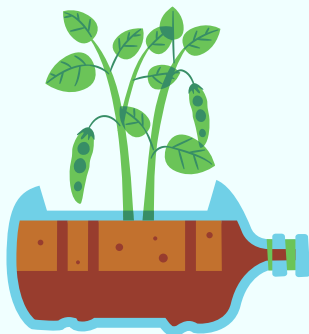
When many think of gardening in the traditional sense, it requires a lot of strength and movement to work the soil, plant the crops and harvest the rewards. General garden maintenance can also require a lot of bending and elbow grease. If you are not able to do a traditional garden, gardening in containers may be able to bring your garden to a more manageable height and size. Container gardening can also be a great alternative for those in apartments or others who lack garden space.

When it comes to picking a container for gardening, there are endless possibilities. Some may prefer the traditional clay or plastic pots but as long as it can hold soil, anything can be a container. Old whiskey barrels, tires, bushel baskets, buckets, wash tubs, coolers, window boxes, hanging baskets and homemade boxes are just a few ideas of alternative containers. The most important characteristics when it comes to choosing a container, is the size and drainage. They must be large enough for the root systems as well as a way for excess water to escape.

While many vegetable and flower plants are able to be grown in containers, not all plants are successful in containers. To combat this issue, plant breeders are developing new cultivars for compact, yet productive varieties. These compact varieties are available from most garden retailers so check for mini or dwarf cultivars.

Although container is a great alternative to gardening in the ground, there are added considerations to be aware of. Container plants will need watered more often due to the greater exposure to drying winds. If the soil feels dry, it's probably time to water again. A good rule of thumb is to use enough water so some excess runs out the drainage holes to help ensure the entire root area is moistened. You will also need to pay attention to the fertilizer needs as the soil nutrients leach out faster when in a container. Follow label direction for application rates.

All in all, container gardening is a great alternative to general gardening in the ground. Not only is it a way to limit the physical exertion required, but it can provide a chance to bring gardening to many new spaces. Whether you decide to grow flowers or food, container gardens will help you enjoy the growing season and provide a new option for décor.



Yard & Garden Calendar

Home (Indoor plants and activities)

- Indoor plants will require more frequent watering and fertilizing as they increase their summer growth.
- You can move houseplants outdoors to a shady location, but pay close attention to their watering needs.
- Cut garden flowers for indoor beauty. Recut the stems again just before placing in water. Add a floral preservative, and change the solution frequently.
- Root cuttings of houseplants and garden plants to increase your collection or share.

Yard (Lawns, woody ornamentals and fruits)

- Prune spring-flowering shrubs after blooms fade.
- Apply fungicide to prevent and control black spot on roses.
- Water newly planted trees and shrubs. Water deeply every 7 to 10 days when rain is lacking.
- Remove faded flowers and seed pods on lilac and other spring-flowering shrubs.
- Many fruit trees experienced freeze damage to flower buds, but a few trees may still have some fruit set. Thin if necessary for heavy crops.
- Mow grass regularly but mow high. Unless excessive, leave lawn clippings on the lawn.
- To keep the lawn green and growing, water as needed to supply a total of 1 to 1.5 inches of water per week.

Garden (Flowers, vegetables and small fruits)

- Discontinue harvesting asparagus and rhubarb around mid-June to allow foliage to develop.
- Mulch to control weeds and conserve soil moisture after soil has warmed.
- Blanch cauliflower when heads are just 2 inches in diameter. Tie leaves up and over the developing head.
- Control weeds. They're easier to pull when they are still young.
- Start seeds of cabbage, Brussels sprouts, broccoli, and cauliflower for fall garden transplants.
- Plan now for your Halloween pumpkin.
- Harvest spring plantings of broccoli, cabbage, and peas.
- Remove cool-season plants, such as radish, spinach, and lettuce, because they will bolt and become bitter during hot summer weather.
- Continue planting carrots, beans, and sweet corn for successive harvests.
- Pinch the shoot tips of chrysanthemums, impatiens, petunias, and coleus to promote bushier growth.
- Supplement natural rainfall (as needed) to supply a total of 1 to 1.5 inches of water per week.





Events



Becoming the Employer of Choice

**A human resource management program
for farm managers and owners**

- June 15, 16
- 8:30am - 12:30pm ET
- Vincennes University Agriculture Center
 - 4207 N Purdue Rd., Vincennes, IN
- This program is geared towards current and future farm or small business managers/owners looking to improve their human resource management skills.
- Email Val Clingerman at clingerman@purdue.edu for more information and to register!

Ants of Indiana

**Join Purdue Extension - Vigo County for
a free virtual program on the ants of
Indiana!**

- June 8
- 5pm CT
- Registration is required and linked below.
- A recording will be made available afterwards.
- For questions, contact Tabby Flinn at carroll@purdue.edu

INPS-SW Spring Native Plant Sale

**Join the Indiana Native Plant Society -
Southwest Chapter for their annual
spring native plant sale!**

- June 4
- 9:00am - 1:00pm CT
- SWIMGA Display Garden
 - 3501 E Lloyd Expy, Evansville, IN 47715

Get the Dirt Conference

**Urban and small farm soil health
conference for growers and ag
professionals!**

- June 2
- 9:00am - 5:00pm ET
- Beck Agricultural Center
 - 4550 U.S. 52, West Lafayette, IN 47906
- This is a full-day conference training for conservation and agricultural professionals working with urban and small farms, vegetable growers, and diverse farms. Growers are also welcome to attend!



Events

Ag and Natural Resource Events

- June 18 - Purdue Fencing School - Dubois
 - [Click here for more information and to register!](#)
- June 29 - Lunch N Learn Grain Marketing - Vincennes
 - Email clingerma@purdue.edu for more information!
- June 2 - Get the Dirt Conference - West Lafayette
 - [Click here to register!](#)
- June 8 - Ants of Indiana - Virtual
 - [Click here to register!](#)
- June 15, 16 - Becoming the Employer of Choice Training - Vincennes
 - Email clingerma@purdue.edu for more information and to register!
- June 28 - Soil Health Dos and Dont's - Virtual
 - [Click here for more information and to register!](#)
- July 26 - Turf and Landscape Field Day, West Lafayette
 - [Click here for more information!](#)
- August 25 - OISC Clean Sweep - Danville
 - [Click here for more information!](#)

Horticulture Events

- June 8 - Home Horticulture Mushrooms - EVPL Red Bank, Evansville
 - Email mcdiss@purdue.edu to register!
- June 11 - RoseFest 2022 - Hamilton County 4-H Fairgrounds, Noblesville
 - [Click here to register!](#)
- June 11 - Azalea Propagation - MGDG, Evansville
 - 3501 E. Lloyd Expressway, 9am
- June 12 - Art in the Garden - MGDG, Evansville
 - 3501 E. Lloyd Expressway, 12:30 - 3:30pm
- June 15 - Home Horticulture Composting - EVPL Red Bank, Evansville
 - Email mcdiss@purdue.edu to register!
- June 18 - Purdue Fencing School - Dubois
 - [Click here to register!](#)
- June 22 - Home Horticulture Gardening for Wildlife - EVPL Red Bank, Evansville
 - Email mcdiss@purdue.edu to register!
- June 29 - Home Horticulture Native Alternatives - EVPL Red Banks, Evansville
 - Email mcdiss@purdue.edu to register!
- July 9 - Dried Floral Design - MGDG, Evansville
 - 3501 E. Lloyd Expressway, 9am
- Various Dates - Adult & Youth Mental Health First Aid - Virtual
 - [Click here to register!](#)

Purdue University is an equal opportunity/equal access/affirmative action institution